

# WE NEED YOUR HELP TO ENABLE KNOWSLEY FAMILIES TO FLOURISH

Our average overhead cost per family is £100 per month or £1,200 a year. For £50 per month or £600 a year we can keep a trained volunteer or for £150 a month or £1,800 a year we can train a volunteer, support a family and provide enrichment activities to their lives. **We do not provide money directly to families.** Our main costs include maintaining a trained professional core team to provide support to families and volunteers, a small office, on-going volunteer training, expenses incurred escorting families to Food Banks, medical appointments, Citizens Advice, benefit issues, legal and other services.

**CALL US ON:** 0151 480 3910

**OR EMAIL US ON:** [info@homestartknowsley.org.uk](mailto:info@homestartknowsley.org.uk)

**FOLLOW US ON FACEBOOK:** [www.facebook.com/homestartknowsley](http://www.facebook.com/homestartknowsley)

**YOU CAN ALSO VISIT OUR WEBSITE TO FIND OUT MORE:**  
[www.homestartknowsley.org.uk](http://www.homestartknowsley.org.uk)

**OR DONATE VIA OUR JUSTGIVING PAGE:**  
[www.justgiving.com/home-startknowsley](http://www.justgiving.com/home-startknowsley)

**Home  
Start**

Support and friendship  
for families

Home-Start Knowsley

55 Rupert Road, Huyton,  
Merseyside L36 9TB



**Home  
Start**

Support and friendship  
for families

Home-Start Knowsley

## SPONSOR A FAMILY & HELP US CHANGE A CHILD'S LIFE FOR GOOD

We have the knowledge, methodology  
and expertise to support parents and  
children to overcome their difficulties.

Every child deserves the best start in  
life and this begins within the home.

£1200 a year or £23  
a week can instigate  
that life-long change



# NOT EVERY CHILD IS BORN INTO A STABLE HOME

Financial pressures result in food and fuel poverty and poor housing conditions.

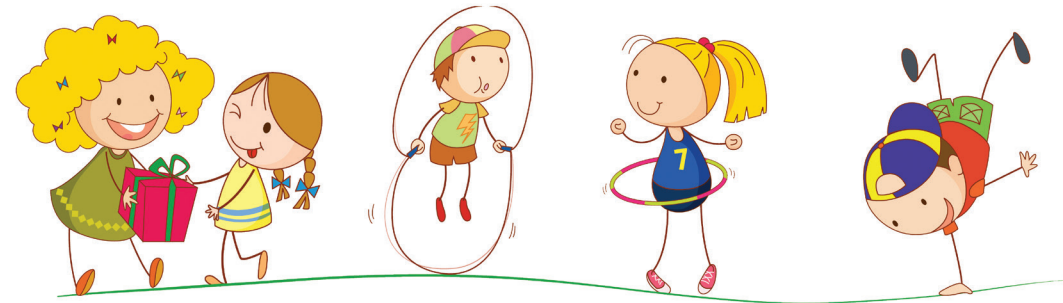
Some live in abusive households where violence and substance misuse is normal.



We train volunteers to support Knowsley families to overcome their difficulties. Parents themselves, our volunteers offer friendship, establish trust, provide continuity, support and stability within the family.

We signpost and support families to deal with agencies, offer reassurance to help them find new ways forward in those areas they are struggling with.

As their confidence grows, we encourage more independence. We aim to empower families to have the parenting skills to ensure they and their children reach their full potential.



Poor knowledge around parenting leads to lack of stimulation and emotional warmth and affection that damages relationships.

Lack of routines and boundaries means children are not school-ready and unprepared for their educational journey and socially isolated.

## HOW WILL I KNOW SPONSORSHIP IS MAKING A DIFFERENCE?

Sponsors will be linked to a family and receive quarterly updates on their progress. You won't know their name, just that they are Knowsley residents.

